

# Facts for Hacks:

Useful facts and figures for health journalists:  
Spring 2015

## Presented at: Reporting the NHS

An NUJ Masterclass for anyone working on health and the NHS

**Thursday 19 March: 6.30-9.00pm**

Headland House, 308-312 Gray's Inn Road  
London WC1X 8DP

- Andrew Gregory – health editor, *The Mirror*.
- Shaun Lintern – the reporter who broke the Mid Staffs story, now on the *Health Service Journal*.
- Professor Allyson Pollock – on the NHS Reinstatement Bill 2015, and NHS privatisation.
- Dr John Lister – veteran campaigner, London Health Emergency, and authority on health policy.
- Caroline Molloy – editor, *Our NHS/Open Democracy*.



Facts compiled by Dr John Lister ([johnlister@healthemergency.org.uk](mailto:johnlister@healthemergency.org.uk))  
Masterclass Chair: Alan Taman ([healthjournos@gmail.com](mailto:healthjournos@gmail.com))

The NUJ is campaigning for better standards, more training, and support in the workplace for all journalists and PRs working in health. The NUJ's Code of Conduct strongly reflects and supports the best professional practice and ethics in journalism and public relations. Join today. More details:

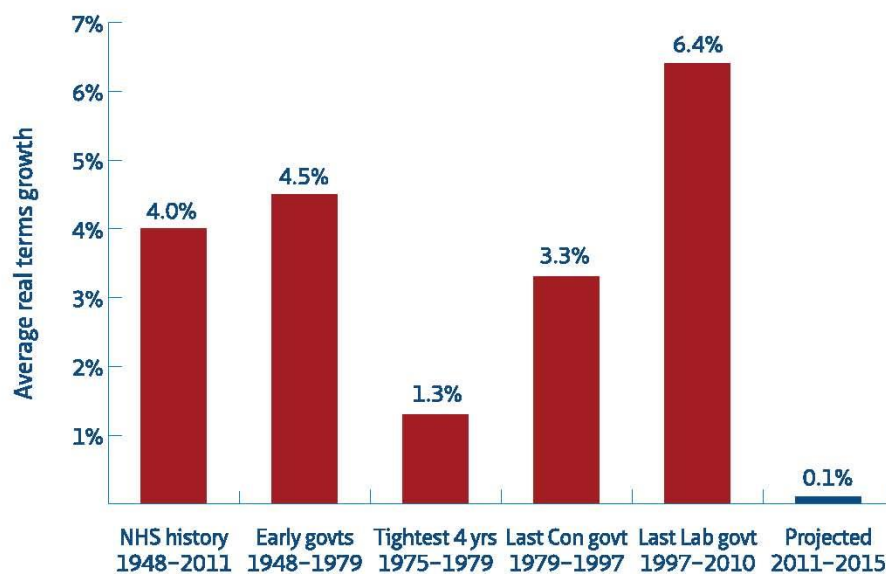
[www.NUJ.org.uk](http://www.NUJ.org.uk)  
[@NUJofficial](https://twitter.com/NUJofficial)

# Useful Facts & Figures for Health Journalists

## Spring 2015

### Historical NHS spending England

**Figure 2. Growth in real terms health spending**



Source: Nuffield Trust, 2012<sup>18</sup>

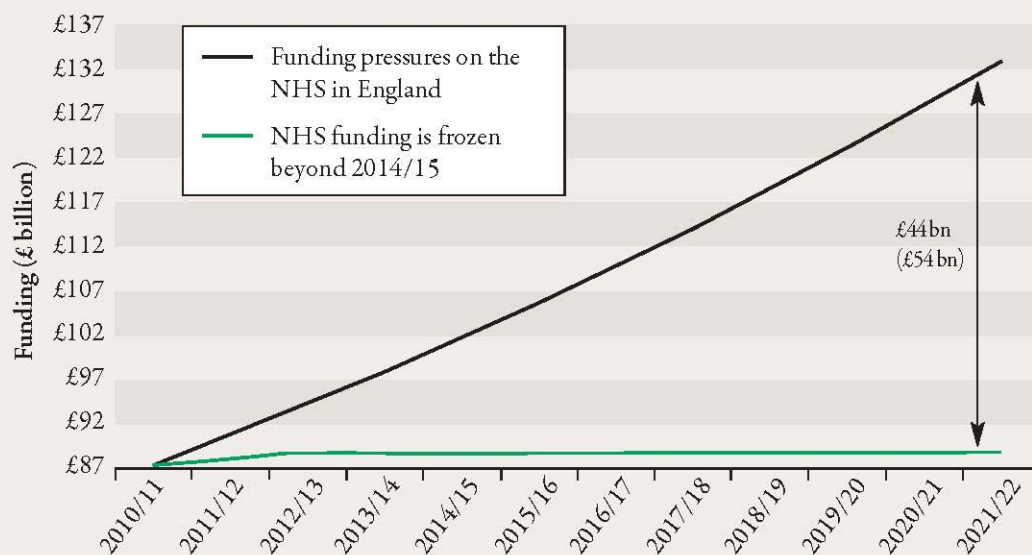
### NHS spending England last 5 years in cash & real terms, and % real terms change

NHS England spending	2009/10	2010/11	2011/12	2012/13	2013/14	2014/15	2015/16
NHS (cash)	98,419	100,418	102,844	105,222	109,721	113,035	115,106
NHS (real terms)	106,189	105,588	105,747	107,036	109,721	110,602	110,855
% change		-0.57	0.15	1.22	2.51	0.80	0.23

Source: *Public Expenditure Statistical Analyses 2014*, Tables 1.3, 1.4 (HM Treasury)

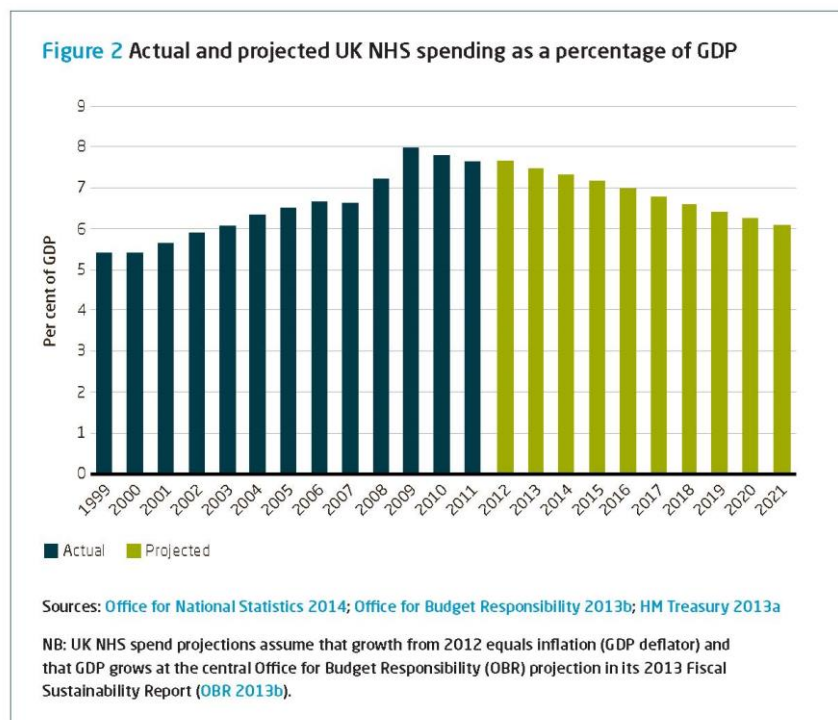
## NHS spending England projected to 2021

Figure 3.1: The funding gap by 2021/22, assuming English NHS funding rises as set out in the 2010 Spending Review to 2014/15 and is frozen in real terms after, and without the effect of QIPP savings



Note: The funding gap for PCT-commissioned NHS services in England is displayed together with the estimate for the departmental expenditure limit, in brackets.

Graph from Roberts et al (2012) *A Decade of Austerity*, Nuffield Trust



Graphic from Appleby J (2014) *The NHS Productivity Challenge*, King's Fund.

## NHS spending England to 2030

Table 2: Health Foundation projected funding gap for English NHS in 2030/31 under three assumptions for productivity

Annual rate of productivity growth	Average annual increase in English NHS spending pressures	NHS England estimate of funding gap in 2020/21	Health Foundation estimated funding gap in 2030/31 (2014/15 prices):		
			Budget stays flat in real terms	Budget rises by 1.5% a year in real terms	Budget rises by 2.3% a year in real terms
0.0%	4.3%	£30bn	£108bn	£78bn	£58bn
1.5%	2.9%	£16bn	£65bn	£34bn	£15bn
2.2%	2.2%	*	£48bn	£17bn	£2bn surplus

Source: Roberts A. *Funding overview: NHS funding projections*. London: The Health Foundation, 2015.

\* The *Five year forward view* does not include a figure for 2.2% productivity growth, the closest comparable figure is £8bn which assumes productivity growth of 2%, rising to 3% by the end of the five years.

## CCG and Specialist care allocations by Region and % London 2015/16

### CCG Commissioning allocations (2015/16) NHS England

Region	Population	Allocation per capita	Total allocation (£000s)	Specialised Services (NHS England) (£000s)	Total secondary care (£000s)
North	16,008,894	1271	20,348,395	3,871,855	24,220,250
Midlands & East	17,277,541	1130	19,520,001	3,791,845	23,311,846
London	9,323,570	1129	10,529,751	2,654,557	13,184,308
South	14,656,022	1118	16,388,853	3,233,465	19,622,318
<b>Total</b>	<b>57,266,027</b>	<b>1166</b>	<b>66,787,000</b>	<b>13,551,721</b>	<b>80,338,721</b>
London as % England	16.3	96.8	15.8	19.6	16.4

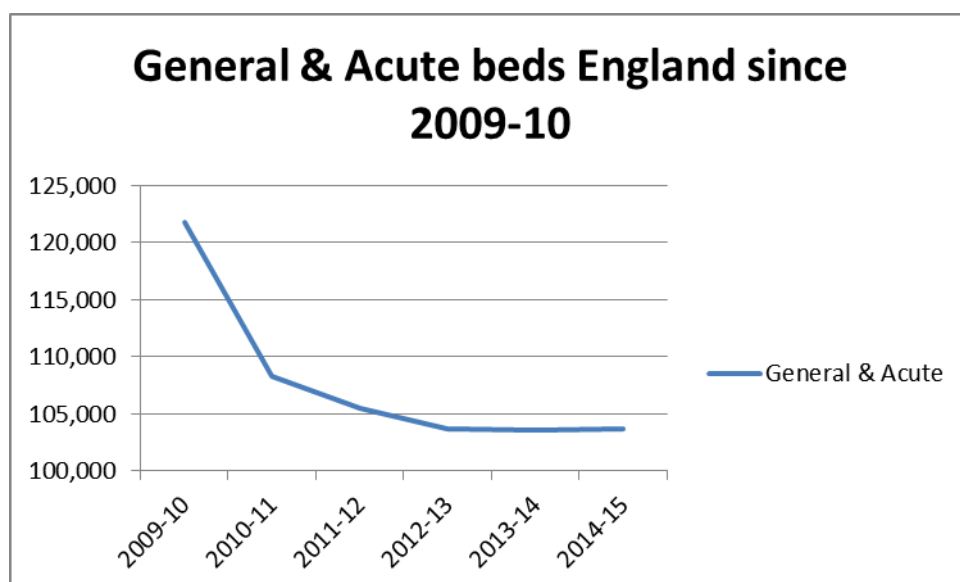
Figures from NHS England

<http://www.england.nhs.uk/wp-content/uploads/2014/12/annx-b-ccg-allctns.pdf>

## England Population, & predicted change 2011-2021

Population change in regions by age group, 2011 to 2021						
REGION	Population (thousands)		Percentage population change by age group			
	mid-2011	mid-2021	All ages	0-15	16-64	65 and over
North East	2,596	2,724	4.9	7.9	-0.7	22.7
North West	7,056	7,364	4.4	9.0	-1.1	20.3
Yorkshire and The Humber	5,288	5,657	7.0	9.3	2.4	22.2
East Midlands	4,537	4,928	8.6	11.7	2.8	27.2
West Midlands	5,609	5,989	6.8	10.3	1.8	21.3
East	5,862	6,458	10.2	14.9	4.2	26.6
London	8,204	9,371	14.2	19.0	12.1	18.7
South East	8,653	9,453	9.3	12.8	3.5	26.5
South West	5,301	5,743	8.3	12.9	1.8	25.3
<b>England</b>	<b>53,107</b>	<b>57,688</b>	<b>8.6</b>	<b>12.6</b>	<b>3.7</b>	<b>23.6</b>
Table source: Office for National Statistics						

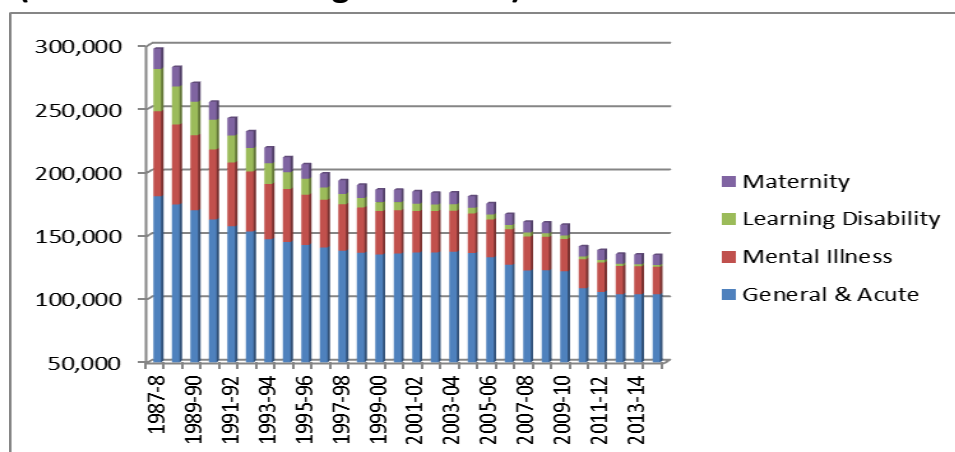
## England Beds available 2009-10 -2014-15



Year	General & Acute	Mental Illness	Learning Disability	Maternity
2009-10	121,756	25,503	2,809	8,392
2010-11	108,349	22,929	2,237	7,962
2011-12	105,545	23,208	1,884	7,987
2012-13	103,730	22,269	1,743	7,816
2013-14	103,643	22,025	1,662	7,707
2014-15	103,690	21,639	1,518	7,861



## Historical changes in bed numbers, England 1987-2015 (NB definitions changed in 2010)



### NHS: England Beds since 1987

Year	General & Acute	Mental Illness	Learning Disability	Maternity
1987-8	180,889	67,122	33,421	15,932
1988-9	174,491	63,012	30,048	15,367
1989-90	169,901	59,288	26,406	14,706
1990-91	162,691	55,239	23,379	14,170
1991-92	157,247	50,278	21,383	13,770
1992-93	153,208	47,308	18,519	13,167
1993-94	147,153	43,532	16,269	12,521
1994-95	144,803	41,827	13,211	11,971
1995-96	142,624	39,477	12,676	11,358
1996-97	140,515	37,640	9,693	11,000
1997-98	138,047	36,601	8,197	10,781
1998-99	136,426	35,692	7,491	10,398
1999-00	135,080	34,173	6,834	10,203
2000-01	135,794	34,214	6,316	9,767
2001-02	136,583	32,783	5,694	9,812
2002-03	136,679	32,753	5,038	9,356
2003-04	137,247	32,252	5,212	9,309
2004-05	136,184	31,286	4,415	9,081
2005-06	132,826	29,802	3,927	8,881
2006-07	126,976	27,914	3,486	8,643
2007-08	122,374	26,929	3,147	8,441
2008-09	122,538	26,448	2,882	8,386
2009-10	121,756	25,503	2,809	8,392
2010-11	108,349	22,929	2,237	7,962
2011-12	105,545	23,208	1,884	7,987
2012-13	103,730	22,269	1,743	7,816
2013-14	103,643	22,025	1,662	7,707
2014-15	103,690	21,639	1,518	7,861

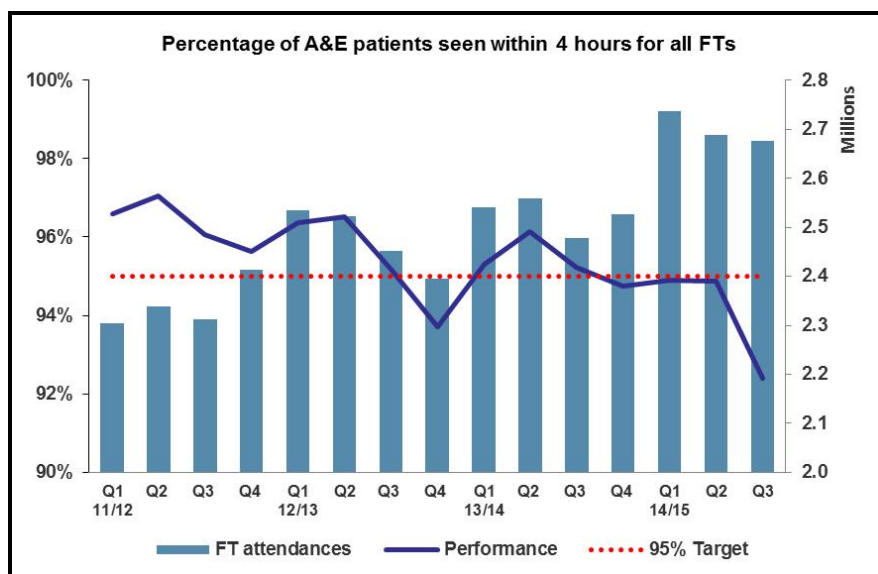
Source: Department of Health (form KH03)

## NHS staff England, 2003-2013

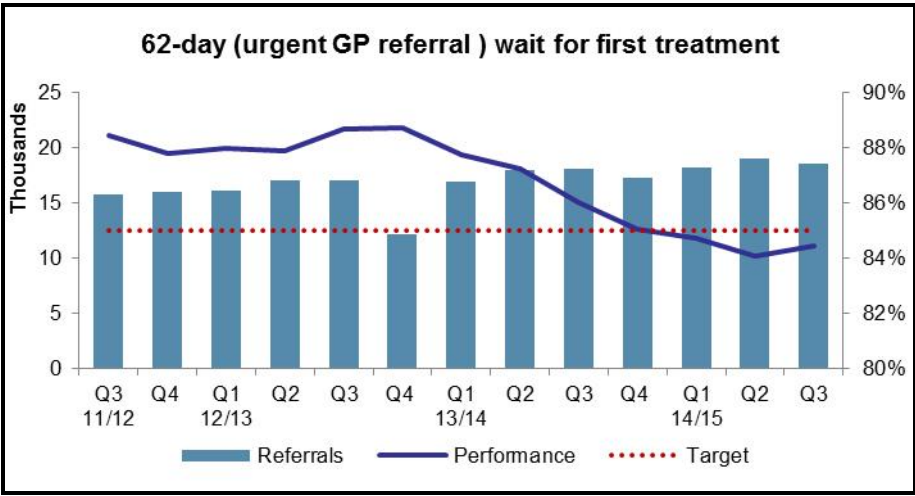
NHS Staffing, England 2003-2013				
	2003	2008	2013	Change 2003- 2013
<b>Total HCHS medical &amp; dental</b>	80,851	98,703	108,732	<b>27,881</b>
<b>Total GPs</b>	33,564	37,720	40,236	<b>6,672</b>
<b>Consultants</b>	28,750	34,910	41,220	<b>12,470</b>
<b>Total qualified nursing staff <sup>3</sup></b>	348,246	368,425	371,777	<b>23,531</b>
<b>Qualified scientific, therapeutic &amp; technical</b>	122,066	142,455	154,109	<b>32,043</b>
<b>Qualified ambulance staff <sup>4</sup></b>	15,957	17,451	18,734	<b>2,777</b>
<b>Support to clinical staff</b>	327,463	334,929	348,999	<b>21,536</b>
<b>NHS infrastructure support</b>	199,808	219,064	211,185	<b>11,377</b>
<i>Breakdown of Infrastructure support staff</i>				
Central functions	92,257	105,354	104,130	<b>11,873</b>
Hotel, property & estates	72,230	73,797	70,892	<b>-1,338</b>
Manager & senior manager	35,321	39,913	36,360	<b>1,039</b>

(Data from HSCIC 2014 Hospital and Community Health Service & General Practice staff)

## England A&E performance, Foundation Trusts (graph: Monitor)

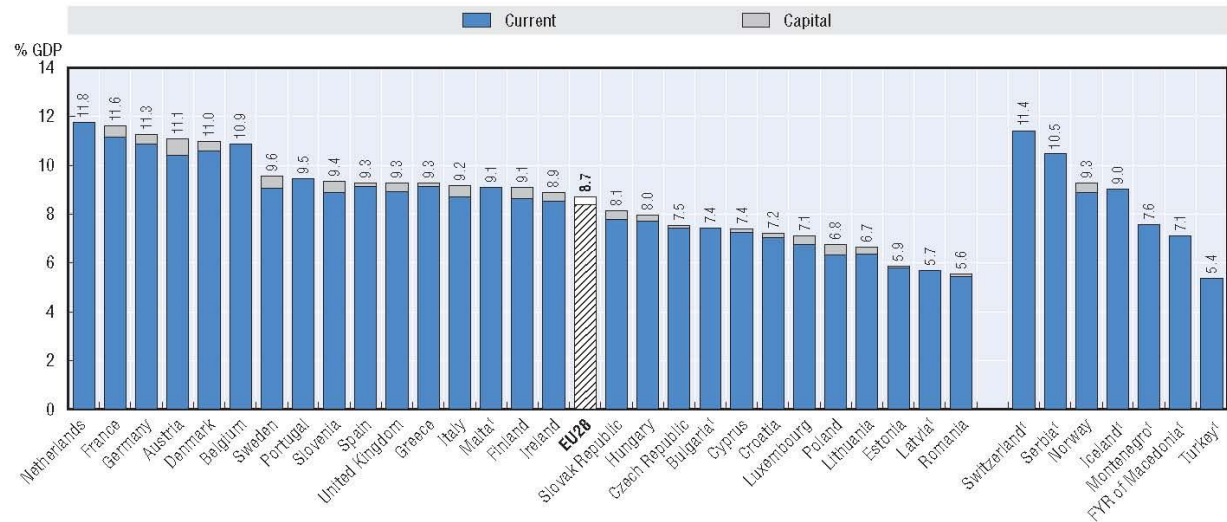


England Foundation Trust performance on cancer care (graph: Monitor)



UK health spending (11<sup>th</sup>) compared with OECD countries as % GDP

6.2.1. Health expenditure as a share of GDP, 2012 (or nearest year)



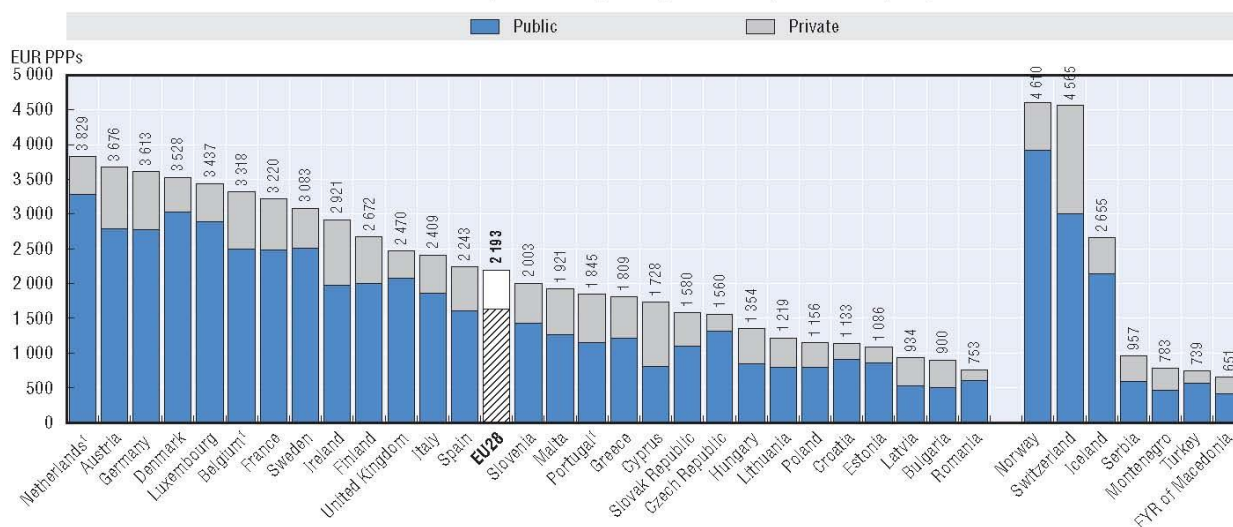
1. Total expenditure only (no breakdown between current and capital spending available).  
Source: OECD Health Statistics 2014, <http://dx.doi.org/10.1787/health-data-en>; Eurostat Statistics Database; WHO Global Health Expenditure Database.

Graph from OECD Health at a Glance 2014



## UK health spending (11<sup>th</sup>) compared with OECD countries as € per head

6.1.1. Health expenditure per capita, 2012 (or nearest year)



1. Current health expenditure.

Source: OECD Health Statistics 2014, <http://dx.doi.org/10.1787/health-data-en>; Eurostat Statistics Database; WHO Global Health Expenditure Database.

Graph from OECD Health at a Glance 2014

### Use of Public & Private hospitals in EU (Table from Project HOPE)

## Public and Private hospitals in EU

data HOPE

Country ZE15	DE	AT	BE	BG	CY	DK	SP	EE	FI
number hospitals	3 460	272	214	262	96	67	741	51	370
acute care hospitals	2 166	177	146	209	x	22	545	33	x
Acute care beds	531 300	48 800	50 200	38 000	2 900	16 800	115 600	5 700	11 700
% beds public	74,7%	76,2%	35,5%	98,3%	46,8%	96,0%	66,2%	89,9%	96,6%
% beds private	25,3%	23,8%	64,5%	1,7%	53,2%	4,0%	33,8%	10,1%	3,4%
Country ZE15	FR	GR	HU	IE	IT	LV	LT	LU	MT
number hospitals	2 890	319	179	179	1 296	119	181	x	10
acute care hospitals	1 599	268	138	53	1 110	80	80	10	10
Acute care beds	225 900	42 000	59 600	11 900	201 400	12 400	19 100	2 300	1 200
% beds public	65,5%	72,0%	97,3%	na	77,0%	95,0%	99,7%	40,0%	91,1%
% beds private	34,5%	28,0%	2,7%	na	23,0%	5,0%	0,3%	60,0%	8,9%
Country ZE15	NL	PL	PT	CZ	RO	UK	SK	SI	SE
number hospitals	198	844	209	363	416	x	144	29	81
acute care hospitals	110	x	170	200	x	x	100	20	80
Acute care beds	51 000	178 100	32 400	63 300	96 100	x	33 000	7 700	20 000
% beds public	15,0%	96,3%	74,8%	80,1%	99,6%	na	94,9%	99,1%	97,0%
% beds private	85,0%	3,7%	25,2%	19,9%	0,4%	na	5,1%	0,9%	3,0%

## NHS England spend on Private providers (estimates)

Table 2.1: PCT spending in real terms on community health services provided by NHS and non-NHS providers, 2010/11 to 2012/13 (£ billion) (2012/13 prices)

Year	PCT spending on ISPs (% total share)	PCT spending on NHS bodies (% total share)	PCT spending on voluntary and other service providers (% total share)	Total PCT spending on community health services
2010/11	£1.001 (12%)	£6.982 (80%)	£0.715 (8%)	£8.698
2011/12	£1.329 (14%)	£6.820 (74%)	£1.073 (12%)	£9.224
2012/13	£1.765 (18%)	£6.724 (69%)	£1.259 (13%)	£9.749

Note: ISP = independent sector provider.

Tables from Nuffield Trust *Into the Red*, July 2014

Table 2.2: PCT spending in real terms on mental health care services, by service provider, 2010/11 to 2012/13 (£ billion) (2012/13 prices)

Year	PCT spending on ISPs (% total share)	PCT spending on NHS bodies (% total share)	PCT spending on voluntary and other service providers (% total share)	Total PCT spending for mental health care services
2010/11	£1.05 (12%)	£7.26 (82%)	£0.56 (6%)	£8.86
2011/12	£1.01 (12%)	£7.11 (82%)	£0.58 (7%)	£8.71
2012/13	£1.17 (13%)	£7.08 (81%)	£0.54 (6%)	£8.80

**6%**

Department of Health figures (Sept 2014) show "use of private sector in NHS represents only 6% of the total NHS budget"

**=£6.3bn**

**420,000**

elective operations delivered to NHS patients by private sector 2013/14, out of

**5.8 million**

NHS admissions from waiting lists

**0%**

Private sector share of **5.4 million** NHS emergency admissions in 2013/14



**3.7%**

of elective and emergency hospital care outsourced in 2013/14.

Private hospitals' slice of NHS mental health budget

**£1.3bn**

Total spend on Primary care, mental health, community & elective care

**£48bn**

Maximum private slice of these budgets

**= 13.1%**

However more recent contracts show NHS retaining only 55% of new contracts, with up to a third going to private firms, or privately-led consortia, and a substantial share to the voluntary sector. There is a lot of NHS still to defend, while the drive for tendering & privatisation is growing.

Graphic researched by John Lister



## PFI latest figures England Department of Health: costliest as % of investment, England

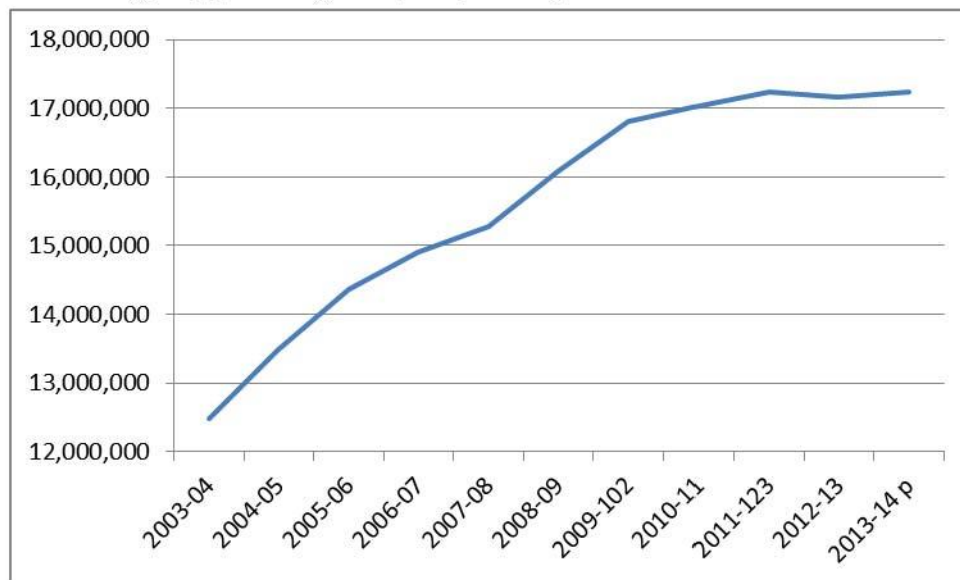
Selected PFI schemes NHS England	Capital Value (£m)	Paid to date March 2013 (£m)	Still to pay (£m)	Total cost (£m)	Unitary charge 2015/16 (£m)	Cost as multiple of capital value
Queens hospital in Romford	266	387	1816	2203	54	8.3
NHS Treatment Centre	54	301	474	775	24	14.4
Barts Health (Barts and London hospitals redevelopment)	1149	675	6468	7143	131	6.2
Reprovision of mental health services, Birmingham & Solihull	18	83	150	233	6	12.9
Stoke Mandeville	46.6	138	508	646	19	13.9
Wycombe & Amersham	45.1	204	318	522	17	11.6
Calderdale Royal Hospital	64.6	281	493	774	25	12.0
University Hospital of North Durham - Dryburn District Hospital	61	238	339	577	22	9.5
Darent Valley	97	316	583	899	28	9.3
Russells Hall Acute Hospital	137	343	1766	2109	47	15.4
Mental Health services reprovision at Newham	14.5	48	144	192	6	13.2
Kingston Hospital	33.1	96	359	455	14	13.7
Reprovision of mental health services, Derby	36	125	238	363	11	10.1
Newham University Hospital	35	131	606	737	17	21.1
Cumberland Infirmary, Carlisle	66.7	245	409	654	22	9.8
Elderly & Mental Health Units Nottinghamshire	18.7	44	190	234	6	12.5
Peterborough acute hospital services	336	127	1837	1964	45	5.8
Princess Royal Hospital (Bromley)	117.9	411	1132	1543	48	13.1
Queen Elizabeth Hospital (Woolwich)	96.1	355	678	1033	32	10.7
James Cook University Hospital	121.9	449	1077	1526	47	12.5
Acute Hospital development, St Helens & Knowsley	338	234	3563	3797	48	11.2
Wythenshawe Hospital	85	368	639	1007	36	11.8
UH Coventry & Warwickshire	378.9	683	3344	4027	84	10.6
New District General Hospital, Worcester	86.6	292	549	841	27	9.7
New District General Hospital, Norfolk & Norwich	158	616	1656	2272	58	14.4
Radiology unit, Royal Wolverhampton NHS Trust	12.8	48	127	175	6	13.7
Hinchingbrooke DTC	30	34	105	139	4	4.6
<b>Totals</b>	<b>3903.5</b>	<b>7272</b>	<b>29568</b>	<b>36840</b>		<b>9.4</b>

Data compiled by John Lister from HM Treasury PFI current projects list, March 2013, published December 2013

Schemes selected on basis of high cost compared with value. But NB some of these schemes are more "affordable" as % of Trust turnover than less "expensive" PFIs. In 2012 Andrew Lansley announced that an extra £1500m in grants were to be made available to bail out hospital trusts with unaffordable PFI schemes. South London Healthcare Trust (Queen Elizabeth Princess Royal Hospital PFIs), Barking, Havering and Redbridge; Peterborough and Stamford Hospitals NHS foundation trust; St Helens and Knowsley; North Cumbria (Cumberland Infirmary), Dartford and Gravesham; and Maidstone and Tunbridge Wells. However more are in trouble; Barts Health is now at least £93m in deficit, Sherwood Forest NHS Foundation Trust is also appealing for some relief from a PFI which is costing 16% of trust revenue.

## Social Care spending , England

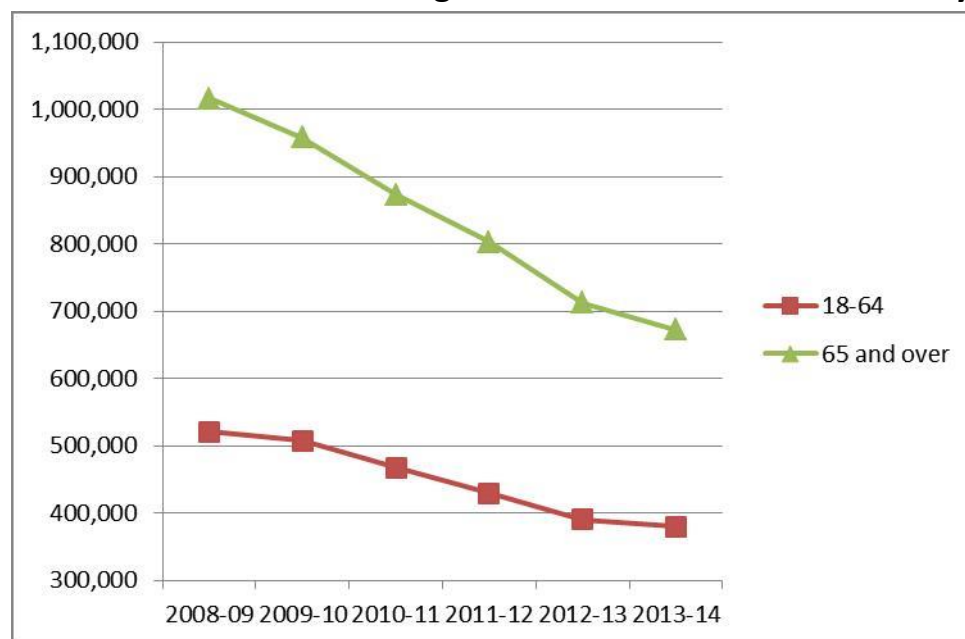
### Total social care spending Adults' Personal Social Services including Supporting People (£000s)



Source: Graph compiled by John Lister from 'Personal Social Services: Expenditure and Unit Costs Return', Health and Social Care Information Centre

Source: *Personal Social Services: Expenditure and Unit Costs Return*, Health and Social Care Information Centre

### Numbers of clients receiving social service-funded community-based services

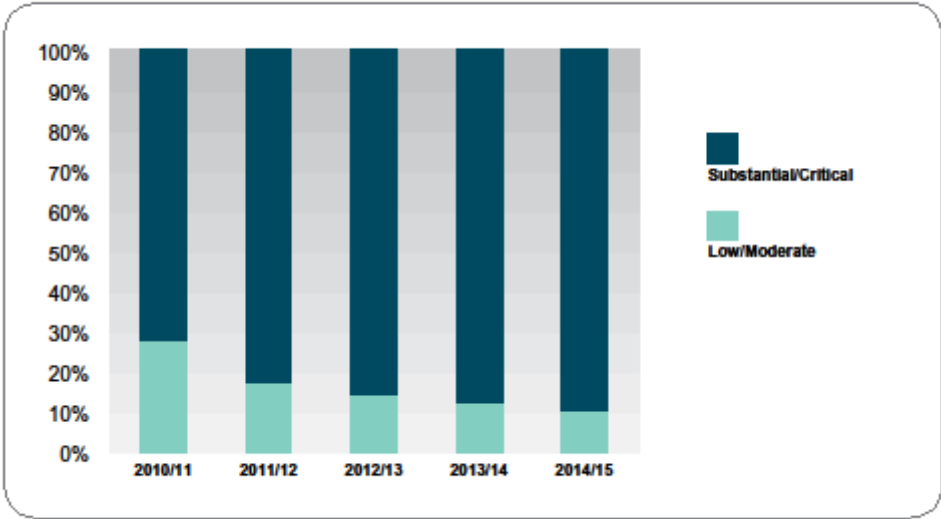


Data from HSCIC Personal Social Services England 2008/09-2014



# Eligibility Criteria for Personal Social Services

Changes to eligibility, 2010/11 – 2014/15

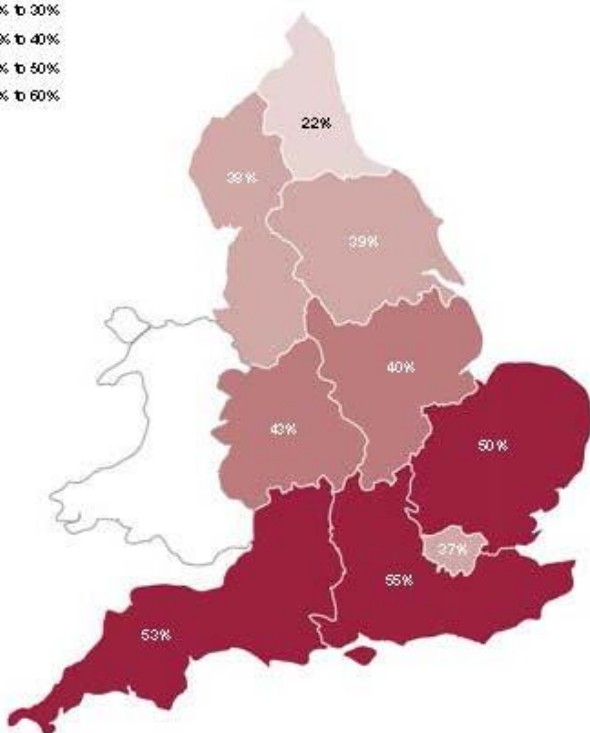


Source: annual ADASS budget survey, 2010-2014

**Figure 3**  
Proportion of care home residents who pay for their own care, 2012

There are more self-funded residents in care homes in the south than the north

- 20% to 30%
- 30% to 40%
- 40% to 50%
- 50% to 60%



Source: Living Alone on Care of Elderly People: UK Market Survey 2012-13, January 2013

**Adult Social Care** (from National Audit Office *Adult Social Care in England an Overview*, March 2014)

**Key facts**

**£19bn**

spending on adult social care managed by local authorities, 2012-13 (includes £2.5 billion user contributions)

**9%**

of adults in England limited 'a lot' in day-to-day activities by illness, disability or old age, 2011

**64%**

of local authority adult social care service users very or extremely satisfied overall with their care and support, 2012-13

<b>152</b>	unitary and upper-tier local authorities in England responsible for adult social services
<b>5.4 million</b>	unpaid informal carers, 2011
<b>1.5 million</b>	people working in adult care, 2012
<b>£10 billion</b>	estimated spending on care and support by self-funders, 2010-11
<b>£55 billion</b>	estimated value of informal care and support, 2011
<b>87 per cent</b>	of adults live in local authorities that set their eligibility threshold to meet substantial or critical needs only